



Ministry of Data  
and Statistics

# Press Release

Embargo 12:00P.M., Feb. 20, 2026 Release Date 15:00PM., Feb. 19, 2026

## Regional Economic Trends in the Fourth Quarter and in 2025

Contact Division	Economic Statistics Planning Division, Economic Statistics Bureau of the Ministry of Data and Statistics	Contact Person	Lim, Kyung eun (042-481-2181)
------------------	--	----------------	-------------------------------



## Regional Economic Trends in the Fourth Quarter

- In the fourth quarter of 2025, the Mining and Manufacturing Production Index marked a year-on-year increase in 5 regions including Chungbuk (11.1%) and Incheon (5.1%). Whereas, the Mining and Manufacturing Production Index marked a year-on-year decrease in 12 regions including Sejong (-9.2%) and Seoul (-7.2%). [The nation: -3.3%]
- The Index of Services marked a year-on-year increase in 12 regions including Incheon (6.4%) and Sejong (6.1%). In the meantime, the Index of Services marked a year-on-year decrease in 5 regions including Jeju (-3.2%) and Gyeongnam (-0.9%). [The nation: 2.6%]
- The Retail Sales Index showed a year-on-year increase in 13 regions including Chungbuk (4.8%) and Incheon (4.7%). Whereas, the Retail Sales Index showed a year-on-year decrease in 3 regions including Seoul (-2.9%) and Jeju (-1.5%). [The nation: 0.8%]
- Exports (based on customs clearance) showed a year-on-year increase in 12 regions including Jeju (87.2%) and Gwangju (33.4%). On the other hand, exports showed a year-on-year decrease in 5 regions including Busan (-5.3%) and Ulsan (-5.3%). [The nation: 8.3%]
- The employment-population ratio marked a year-on-year increase in 9 regions including Gyeongnam (2.2%p) and Gwangju (1.7%p). Whereas, the employment-population ratio marked a year-on-year decrease in 6 regions including Sejong (-1.9%p) and Incheon (-1.1%p). [The nation: 0.1%p]
- The Consumer Price Index marked a year-on-year increase in all 17 regions including Sejong (2.7%) and Gyeongnam (2.6%). [The nation: 2.4%]

### < Major Regional Economic Indicators in the Fourth Quarter of 2025 >

(Year-on-year, %, %p)

	Mining and Manufacturing Production Index	Index of Services	Retail Sales Index	Exports	Employment- population ratio	Consumer Price Index
Seoul	-7.2	5.2	-2.9	-1.0	0.0	2.2
Busan	-7.1	2.6	-0.3	-5.3	0.8	2.3
Daegu	-3.3	0.7	3.4	7.6	0.4	2.3
Incheon	5.1	6.4	4.7	-4.6	-1.1	2.3
Gwangju	1.4	2.1	0.0	33.4	1.7	2.2
Daejeon	-6.2	0.5	3.9	9.1	1.6	2.2
Ulsan	2.0	3.6	2.7	-5.3	-0.9	2.5
Sejong	-9.2	6.1	2.7	12.4	-1.9	2.7
Gyeonggi	-2.5	4.9	1.9	21.6	-0.6	2.5
Gangwon	-3.7	-0.6	1.9	2.3	0.9	2.5
Chungbuk	11.1	1.0	4.8	26.4	1.7	2.5
Chungnam	0.2	0.8	0.9	15.6	0.0	2.4
Jeonbuk	-5.6	-0.3	1.0	3.8	-0.1	2.6
Jeonnam	-4.7	-0.7	2.6	0.9	-0.6	2.5
Gyeongbuk	-1.7	0.5	0.5	-4.6	0.6	2.4
Gyeongnam	-5.9	-0.9	1.6	6.8	2.2	2.6
Jeju	-0.4	-3.2	-1.5	87.2	1.5	2.2
The nation	-3.3	2.6	0.8	8.3	0.1	2.4

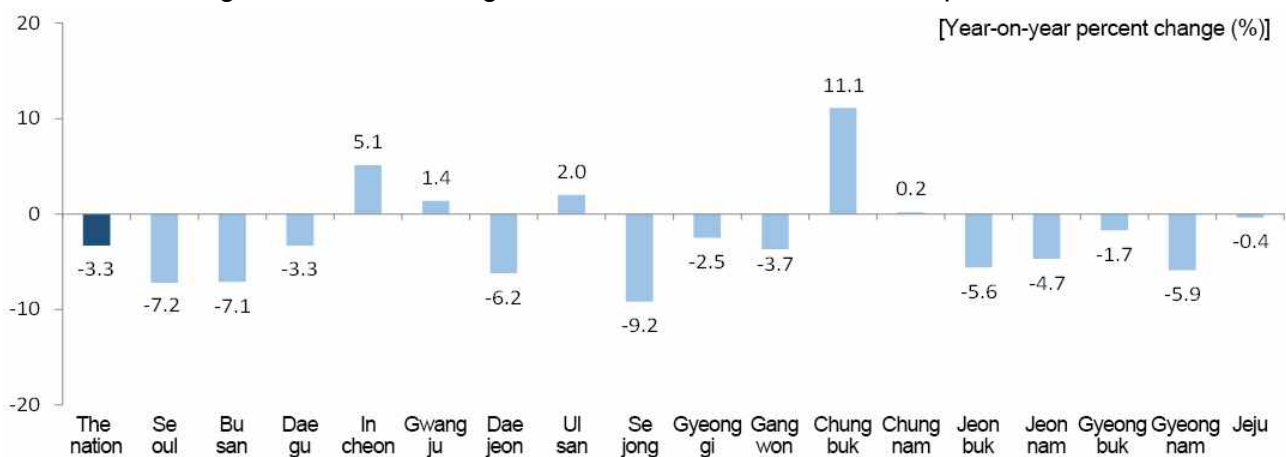
## Production

### □ (Mining and Manufacturing Production Index)

In the fourth quarter of 2025, the Mining and Manufacturing Production Index of the nation went down by 3.3% year-on-year due to the decrease in 'Motor vehicles, trailers and semitrailers' and 'Fabricated metal products'.

- Chungbuk (11.1%), Incheon (5.1%) and Ulsan (2.0%) recorded a year-on-year increase in the Mining and Manufacturing Production Index due to a rise in 'Semiconductors & electronic components', 'Other machinery and equipment' and 'Other transport equipment'. In the meantime, Sejong (-9.2%), Seoul (-7.2%) and Busan (-7.1%) recorded a year-on-year decrease in the Mining and Manufacturing Production Index due to a drop in 'Electrical equipment', 'Food products' and 'Motor vehicles, trailers and semitrailers'.

< Mining and Manufacturing Production Index in the fourth quarter of 2025 >

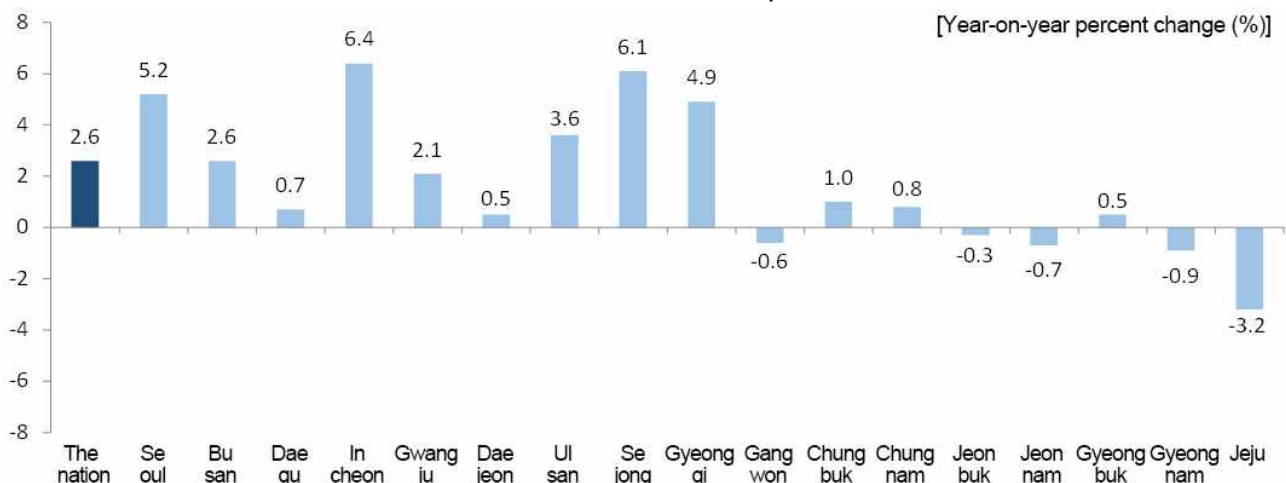


### □ (Index of Services)

In the fourth quarter of 2025, the Index of Services for the nation went up by 2.6% year-on-year due to the increase in 'Wholesale and Retail Trade' and 'Human Health and Social Work Activities'.

- Jeju (-3.2%), Gyeongnam (-0.9%) and Jeonnam (-0.7%) recorded a year-on-year decrease owing to the drop in 'Real Estate Activities', 'Arts, Sports and Recreation-related Services' and 'Professional, Scientific and Technical Activities'. In the meantime, Incheon (6.4%), Sejong (6.1%) and Seoul (5.2%) recorded a year-on-year increase owing to the rise in 'Arts, Sports and Recreation-related Services', 'Information and Communication' and 'Financial and Insurance Activities'.

< Index of Services in the fourth quarter of 2025 >



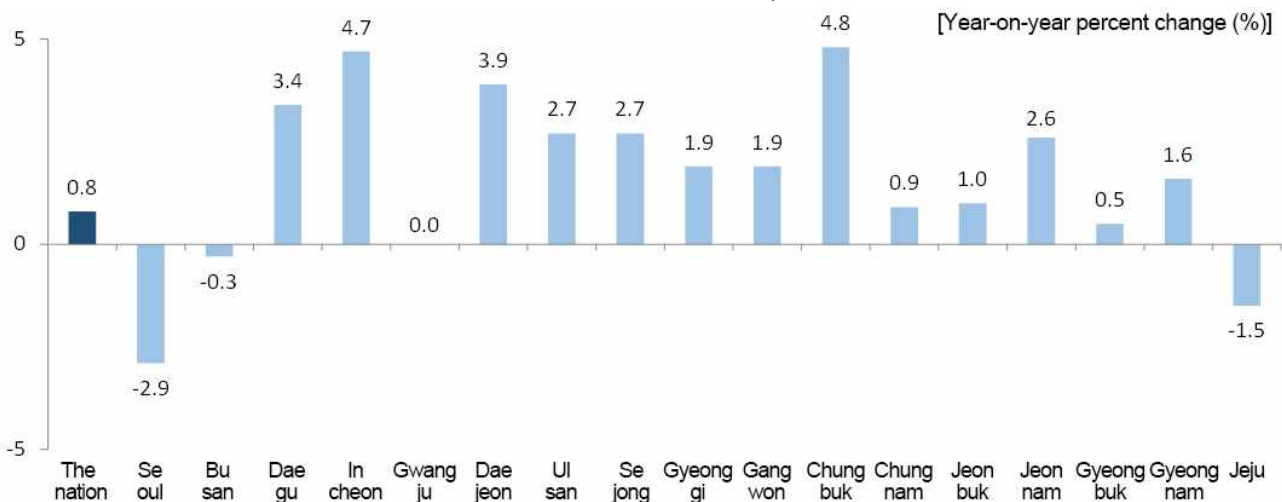
## Consumption and Construction

### □ (Retail Sales Index)

In the fourth quarter of 2025, the Retail Sales Index of the nation went up by 0.8% year-on-year owing to a rise in 'Specialized stores' and 'Department stores'.

- Seoul (-2.9%), Jeju (-1.5%) and Busan (-0.3%) marked a year-on-year decrease in the Retail Sales Index owing to a drop in 'Supermarkets, convenient stores and other retail sale in non-specialized stores', 'Passenger cars and fuel stores' and 'Large discount stores'. On the other hand, Chungbuk (4.8%), Incheon (4.7%) and Daejeon (3.9%) marked a year-on-year increase in the Retail Sales Index due to a rise in 'Supermarkets, convenient stores and other retail sale in non-specialized stores', 'Duty-free shops' and 'Specialized stores'.

< Retail Sales Index in the fourth quarter of 2025 >



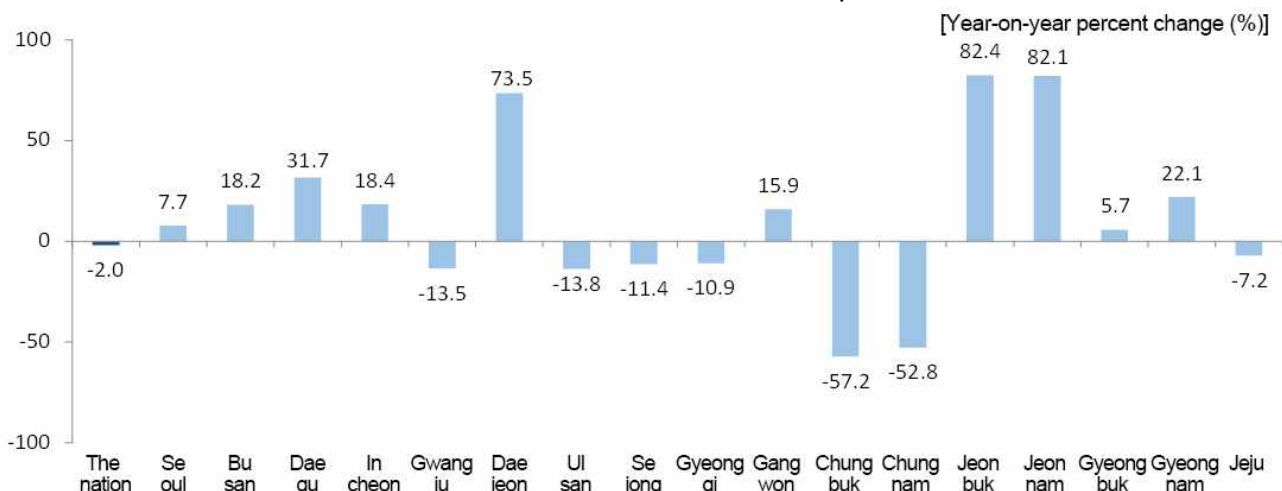
\* The Retail Sales Index of the nation includes 'Retail Sales not in Stores'. Whereas, the Retail Sales Index of 17 metropolitan cities and provinces excludes 'Retail Sales not in Stores'.

### □ (Construction orders received)

In the fourth quarter of 2025, the construction orders received of the nation declined by 2.0% year-on-year due to the decrease in 'Machinery installation' and 'Factories and warehouses'.

- Jeonbuk (82.4%), Jeonnam (82.1%) and Daejeon (73.5%) recorded a year-on-year rise in construction orders received owing to the increase in 'Roads and bridges', 'Power generation and transmission' and 'Dwellings'. Whereas, Chungbuk (-57.2%), Chungnam (-52.8%) and Ulsan (-13.8%) recorded a year-on-year drop in construction orders received owing to the decrease in 'Dwellings', 'Machinery installation' and 'Roads and bridges'.

< Construction orders received in the fourth quarter of 2025 >



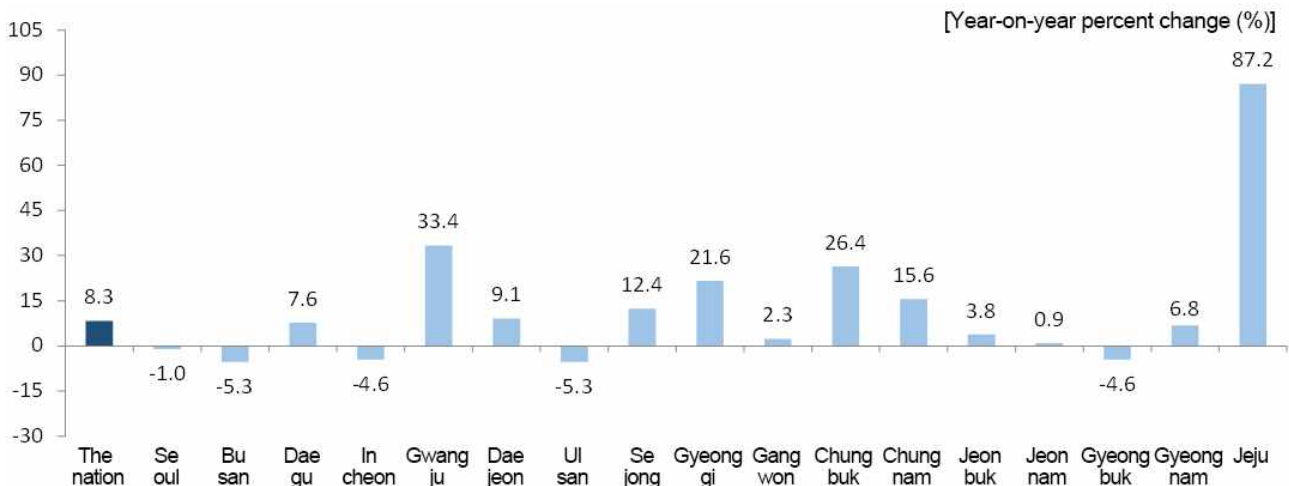
## Exports

### □ (Exports)

In the fourth quarter of 2025, the exports of the nation rose by 8.3% year-on-year due to an increase in 'Memory semiconductor' and 'Vessels'.

- Ulsan (-5.3%), Busan (-5.3%) and Gyeongbuk (-4.6%) recorded a year-on-year decrease in exports due to a drop in 'Passenger cars' and 'Alloy steel plate'. In the meantime, Jeju (87.2%), Gwangju (33.4%) and Chungbuk (26.4%) recorded a year-on-year increase in exports owing to a rise in 'Other integrated circuit semiconductors and components', 'Processor and controller' and 'Memory semiconductor'.

#### < Exports in the fourth quarter of 2025 >



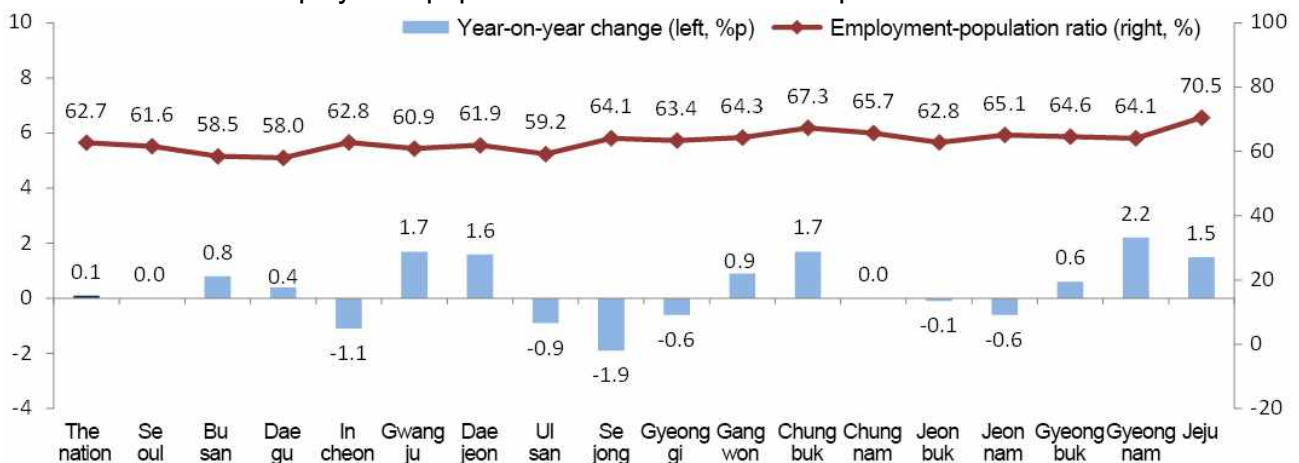
## Employment

### □ (Employment-population ratio)

In the fourth quarter of 2025, the employment-population ratio of the nation stood at 62.7%, going up by 0.1%p year-on-year due to the rise in the employment-population ratio of the groups aged '40 ~ 49' and '60 or more'.

- The employment-population ratio showed a year-on-year drop in Sejong (-1.9%p), Incheon (-1.1%p) and Ulsan (-0.9%p). In the meantime, the employment-population ratio showed a year-on-year rise in Gyeongnam (2.2%p), Gwangju (1.7%p) and Chungbuk (1.7%p).

#### < Employment-population ratio in the fourth quarter of 2025 >



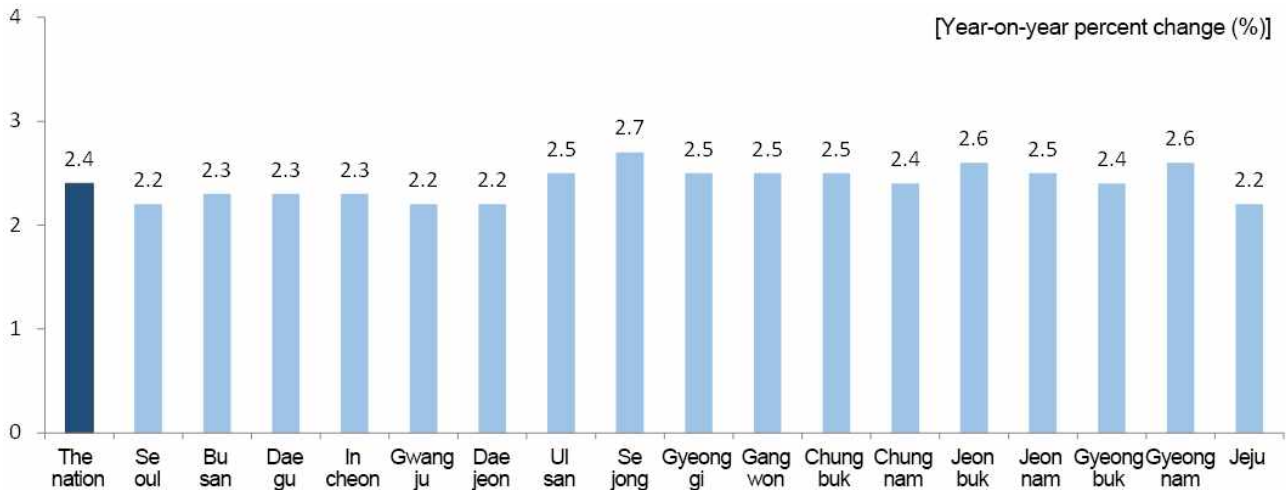
## Consumer Price Index

### (Consumer Price Index)

In the fourth quarter of 2025, the Consumer Price Index of the nation went up by 2.4% from the fourth quarter of 2024 owing to a rise in 'Personal services excluding eating out' and 'Eating out'.

- Daejeon (2.2%), Seoul (2.2%) and Jeju (2.2%) recorded a lower increase rate compared to the nation. Whereas, Sejong (2.7%), Jeonbuk (2.6%) and Gyeongnam (2.6%) recorded a higher increase rate owing to the rise in 'Personal services excluding eating out' compared to the nation.

< Consumer Price Index in the fourth quarter of 2025 >



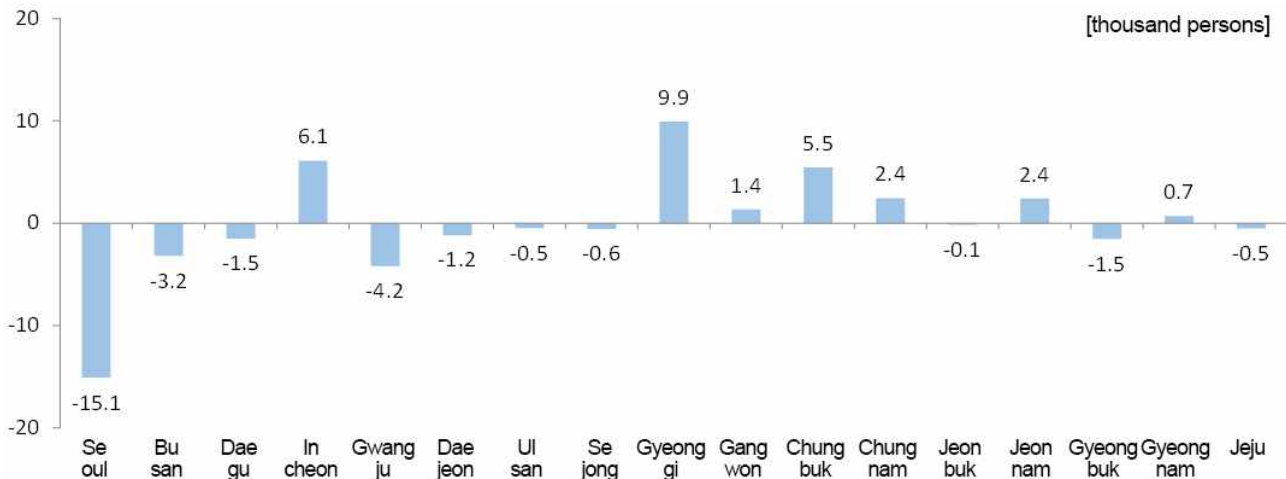
## Population

### (Internal net migration)

In the fourth quarter of 2025, 7 regions including Gyeonggi (9,938 persons), Incheon (6,098 persons) and Chungbuk (5,468 persons) recorded a plus net migration.

- 10 regions including Seoul (-15,096 persons), Gwangju (-4,222 persons) and Busan (-3,211 persons) recorded a minus net migration.

< Internal net migration by province in the fourth quarter of 2025 >



< Major Regional Economic Indicators ① >

[Year-on-year, %]

Metropolitan cities and provinces	Production								Consumption <Retail Sales Index <sup>3)</sup> >				Construction <Construction orders received>			
	<Mining and Manufacturing Production Index <sup>1)</sup> >				<Index of Services <sup>2)</sup> >				1Q 2025	2Q 2025	3Q 2025	4Q 2025 <sup>p</sup>	1Q 2025	2Q 2025	3Q 2025	4Q 2025 <sup>p</sup>
	1Q 2025	2Q 2025	3Q 2025	4Q 2025 <sup>p</sup>	1Q 2025	2Q 2025	3Q 2025	4Q 2025 <sup>p</sup>								
The nation	2.0	2.1	6.0	-3.3	0.4	1.4	3.2	2.6	-0.3	0.0	1.5	0.8	1.1	-5.4	29.4	-2.0
Seoul	-5.5	-10.0	-8.0	-7.2	1.1	2.7	6.0	5.2	-3.4	-1.8	-2.4	-2.9	125.9	30.0	75.7	7.7
Busan	-2.4	-4.3	-2.6	-7.1	-0.7	2.3	4.4	2.6	4.6	1.5	1.9	-0.3	27.2	80.1	45.8	18.2
Daegu	-5.1	-2.1	9.7	-3.3	-2.8	-1.0	1.7	0.7	-1.8	-1.4	5.7	3.4	13.8	371.1	6.5	31.7
Incheon	-3.8	-4.2	-0.4	5.1	0.9	3.7	2.7	6.4	2.8	5.3	5.6	4.7	-27.5	-49.4	6.8	18.4
Gwangju	10.2	11.2	14.8	1.4	-1.8	0.6	3.3	2.1	1.6	2.7	-1.0	0.0	-84.8	-56.2	3.5	-13.5
Daejeon	1.8	-1.0	-1.5	-6.2	-1.8	0.9	3.9	0.5	-2.8	1.7	2.6	3.9	-63.5	-49.4	39.3	73.5
Ulsan	-0.7	2.6	7.8	2.0	-0.8	-0.3	5.5	3.6	3.9	5.8	2.7	2.7	3.8	-15.1	4.7	-13.8
Sejong	-7.6	-3.5	-1.7	-9.2	4.3	4.6	3.3	6.1	2.3	2.7	9.0	2.7	362.3	-67.5	-38.1	-11.4
Gyeonggi	7.3	12.3	16.2	-2.5	-0.1	5.4	4.7	4.9	0.2	0.4	0.3	1.9	-21.2	-8.4	43.5	-10.9
Gangwon	-10.9	2.8	8.9	-3.7	-0.5	-1.5	1.1	-0.6	0.2	-1.0	-0.6	1.9	-3.2	-52.2	-58.6	15.9
Chungbuk	5.8	13.7	19.7	11.1	-0.5	0.2	3.6	1.0	0.7	1.7	3.1	4.8	275.6	-4.1	105.5	-57.2
Chungnam	-0.3	-6.2	3.6	0.2	-1.3	-0.1	2.3	0.8	1.1	-0.6	1.0	0.9	-55.7	-55.4	-18.8	-52.8
Jeonbuk	-0.5	-1.2	0.9	-5.6	-1.5	-1.1	1.1	-0.3	0.8	0.3	-1.1	1.0	61.9	108.6	-24.4	82.4
Jeonnam	-0.6	-2.2	-4.7	-4.7	-1.5	-0.6	-1.0	-0.7	0.3	0.4	0.2	2.6	-64.0	-37.6	-25.0	82.1
Gyeongbuk	2.0	4.1	3.2	-1.7	-2.8	-0.9	1.3	0.5	-0.5	-1.5	-1.4	0.5	-33.5	-0.3	-27.2	5.7
Gyeongnam	-0.7	-1.2	3.2	-5.9	-3.0	-2.8	-0.5	-0.9	4.7	1.5	2.2	1.6	-68.9	97.9	13.5	22.1
Jeju	0.5	-3.1	-3.7	-0.4	-0.4	-8.9	-8.4	-3.2	-6.6	-2.2	-1.9	-1.5	-49.0	-70.6	-65.4	-7.2

1) Including Mining, Manufacturing, Electricity and Gas

2) Including Wholesale and retail trade, Transportation, Accommodation and food service activities, Information and communications, Financial and insurance activities, Real estate activities and renting and leasing, Professional, scientific and technical activities, Business facilities management and business support services, Education, Human health and social work activities, Arts, sports and recreation related services, Membership organizations, repair and other personal services and Sewerage, waste management, materials recovery and remediation activities (volume index)

3) Including 'Department stores', 'Large discount stores', 'Supermarkets and convenience stores', 'Passenger cars and fuel stores' and 'Specialized stores' (volume index)

< Major Regional Economic Indicators ② >

[Year-on-year, %]

Metropolitan cities and provinces	Exports				Employment-population ratio <sup>4)</sup> (%)				Consumer Price Index				Net migration <sup>5)</sup> (thousand persons)			
	1Q 2025	2Q 2025	3Q 2025	4Q 2025 <sup>p</sup>	1Q 2025	2Q 2025	3Q 2025	4Q 2025	1Q 2025	2Q 2025	3Q 2025	4Q 2025	1Q 2025	2Q 2025	3Q 2025	4Q 2025
The nation	-2.5	2.0	6.3	8.3	61.8	63.5	63.5	62.7	2.1	2.1	2.0	2.4	-	-	-	-
Seoul	5.2	1.4	-3.0	-1.0	60.4	61.8	62.3	61.6	2.0	2.0	1.9	2.2	6.1	-10.1	-7.8	-15.1
Busan	-3.4	-6.2	5.3	-5.3	57.4	58.9	58.7	58.5	2.1	2.2	2.1	2.3	-3.4	-3.7	-1.9	-3.2
Daegu	-16.7	4.6	14.2	7.6	57.3	58.5	58.1	58.0	2.0	2.1	1.8	2.3	-1.2	-2.1	0.5	-1.5
Incheon	-1.7	5.4	5.4	-4.6	62.9	63.8	63.7	62.8	2.1	2.0	1.9	2.3	11.1	8.1	7.0	6.1
Gwangju	-10.8	10.4	23.6	33.4	59.9	61.0	61.6	60.9	2.1	1.7	1.7	2.2	-4.9	-2.9	-1.7	-4.2
Daejeon	8.9	9.6	8.9	9.1	61.0	62.5	62.7	61.9	2.0	1.9	1.9	2.2	0.9	0.4	2.7	-1.2
Ulsan	-5.9	-2.8	8.2	-5.3	59.4	60.6	60.2	59.2	1.9	1.9	2.1	2.5	-2.7	-1.3	-1.0	-0.5
Sejong	-10.4	-37.1	15.6	12.4	64.0	65.6	64.7	64.1	2.6	2.1	2.1	2.7	0.8	0.0	-0.3	-0.6
Gyeonggi	1.3	2.7	11.0	21.6	63.2	64.7	64.0	63.4	2.2	2.1	2.0	2.5	5.6	10.4	7.0	9.9
Gangwon	3.5	4.0	15.8	2.3	60.2	66.7	66.5	64.3	2.3	2.1	1.9	2.5	-2.4	-0.6	0.3	1.4
Chungbuk	9.0	34.8	36.8	26.4	65.2	68.1	68.1	67.3	2.0	2.0	1.9	2.5	1.2	1.6	2.4	5.5
Chungnam	-4.3	-0.8	7.2	15.6	63.0	66.9	66.5	65.7	2.1	2.1	1.9	2.4	1.5	2.1	2.2	2.4
Jeonbuk	-4.5	-0.5	9.2	3.8	61.8	63.8	64.9	62.8	2.3	2.1	2.0	2.6	-2.0	-1.0	-0.5	-0.1
Jeonnam	-19.3	-13.5	-1.6	0.9	64.6	66.6	66.1	65.1	2.2	2.1	1.9	2.5	-0.2	0.7	-1.5	2.4
Gyeongbuk	-3.1	-3.7	-6.5	-4.6	62.7	65.5	66.3	64.6	2.1	1.9	1.9	2.4	-3.5	-0.2	-3.9	-1.5
Gyeongnam	1.8	12.9	-5.5	6.8	62.3	63.3	63.6	64.1	2.0	2.1	2.2	2.6	-4.7	-0.7	-2.8	0.7
Jeju	45.3	37.8	154.1	87.2	68.8	70.2	69.9	70.5	1.6	1.5	1.7	2.2	-2.2	-0.9	-0.8	-0.5

4) Employment-population ratio (%) = (Employed persons ÷ Population aged 15 or more) × 100

5) Net migration (thousand persons) = In-migration - Out-migration (Net migration of the nation = 0)

6) 'p' indicates preliminary data.

## Regional Economic Trends in 2025

- In 2025, the Mining and Manufacturing Production Index showed a year-on-year increase in 5 regions including Chungbuk (12.6%) and Gwangju (9.4%). Whereas, the Mining and Manufacturing Production Index showed a year-on-year decrease in 12 regions including Seoul (-7.7%) and Sejong (-5.5%). [The nation: 1.6%]
- The Index of Services marked a year-on-year increase in 10 regions including Sejong (4.5%) and Seoul (3.8%). In the meantime, the Index of Services marked a year-on-year decrease in 7 regions including Jeju (-5.4%) and Gyeongnam (-1.8%). [The nation: 1.9%]
- The Retail Sales Index showed a year-on-year increase in 14 regions including Incheon (4.5%) and Sejong (4.1%). Whereas, the Retail Sales Index showed a year-on-year decrease in 3 regions including Jeju (-3.1%) and Seoul (-2.7%). [The nation: 0.5%]
- Exports (based on customs clearance) showed a year-on-year increase in 12 regions including Jeju (80.2%) and Chungbuk (26.8%). Whereas, exports showed a year-on-year decrease in 5 regions including Sejong (-10.1%) and Jeonnam (-8.9%). [The nation: 3.6%]
- The employment-population ratio marked a year-on-year increase in 10 regions including Daejeon (1.4%p) and Chungbuk (1.3%p). Whereas, the employment-population ratio marked a year-on-year decrease in Sejong (-0.6%p) and Jeonbuk (-0.5%p). [The nation: 0.2%p]
- The Consumer Price Index marked a year-on-year increase in all 17 regions including Sejong (2.4%) and Jeonbuk (2.2%). [The nation: 2.1%]

### < Major Regional Economic Indicators in 2025 >

(Year-on-year, %, %p)

	Mining and Manufacturing Production Index	Index of Services	Retail Sales Index	Exports	Employment- population ratio	Consumer Price Index
Seoul	-7.7	3.8	-2.7	0.5	-0.2	2.0
Busan	-4.1	2.2	1.9	-2.5	0.6	2.2
Daegu	-0.5	-0.4	1.5	1.8	0.0	2.1
Incheon	-1.0	3.5	4.5	1.0	-0.2	2.1
Gwangju	9.4	1.1	0.8	12.6	0.2	1.9
Daejeon	-1.7	0.9	1.4	9.1	1.4	2.0
Ulsan	2.8	2.0	3.8	-1.5	0.1	2.1
Sejong	-5.5	4.5	4.1	-10.1	-0.6	2.4
Gyeonggi	7.9	3.8	0.7	9.4	-0.3	2.2
Gangwon	-0.9	-0.4	0.1	6.2	0.9	2.2
Chungbuk	12.6	1.1	2.6	26.8	1.3	2.1
Chungnam	-0.7	0.4	0.7	4.8	0.7	2.1
Jeonbuk	-1.6	-0.4	0.3	1.8	-0.5	2.2
Jeonnam	-3.1	-0.9	0.8	-8.9	-0.5	2.2
Gyeongbuk	1.8	-0.5	-0.7	-4.6	0.8	2.1
Gyeongnam	-1.2	-1.8	2.5	3.7	1.2	2.2
Jeju	-1.6	-5.4	-3.1	80.2	0.5	1.8
The nation	1.6	1.9	0.5	3.6	0.2	2.1

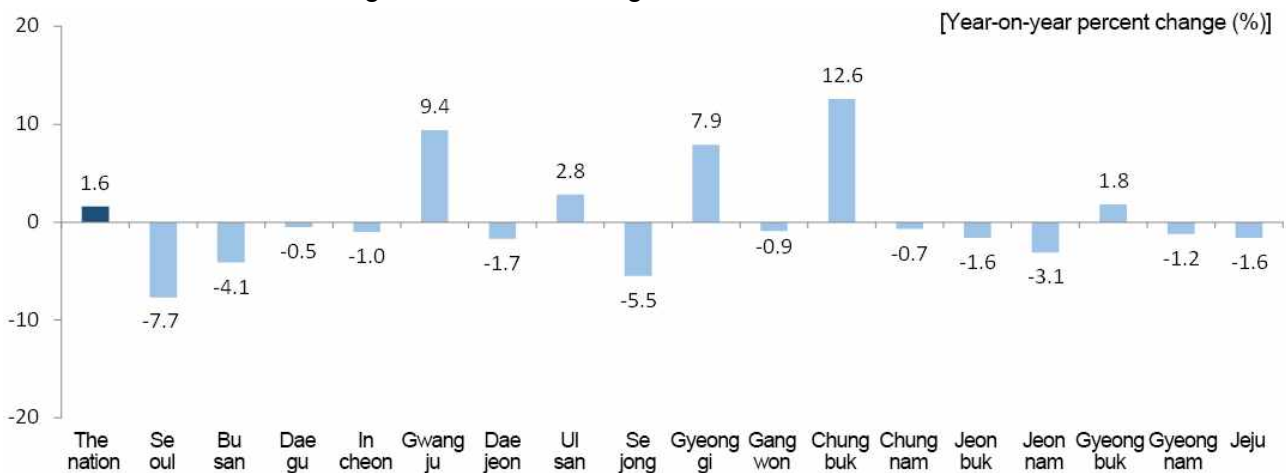
## Production

### □ (Mining and Manufacturing Production Index)

In 2025, the Mining and Manufacturing Production Index of the nation went up by 1.6% year-on-year due to the increase in 'Semiconductors & electronic components' and 'Other transport equipment'.

- Seoul (-7.7%), Sejong (-5.5%) and Busan (-4.1%) recorded a year-on-year decrease in the Mining and Manufacturing Production Index due to a drop in 'Electricity and gas', 'Electrical equipment' and 'Fabricated metal products'. In the meantime, Chungbuk (12.6%), Gwangju (9.4%) and Gyeonggi (7.9%) recorded a year-on-year increase in the Mining and Manufacturing Production Index due to a rise in 'Semiconductors & electronic components', 'Electrical equipment' and 'Medical, precision and optical instruments, watches and clocks'.

< Mining and Manufacturing Production Index in 2025 >

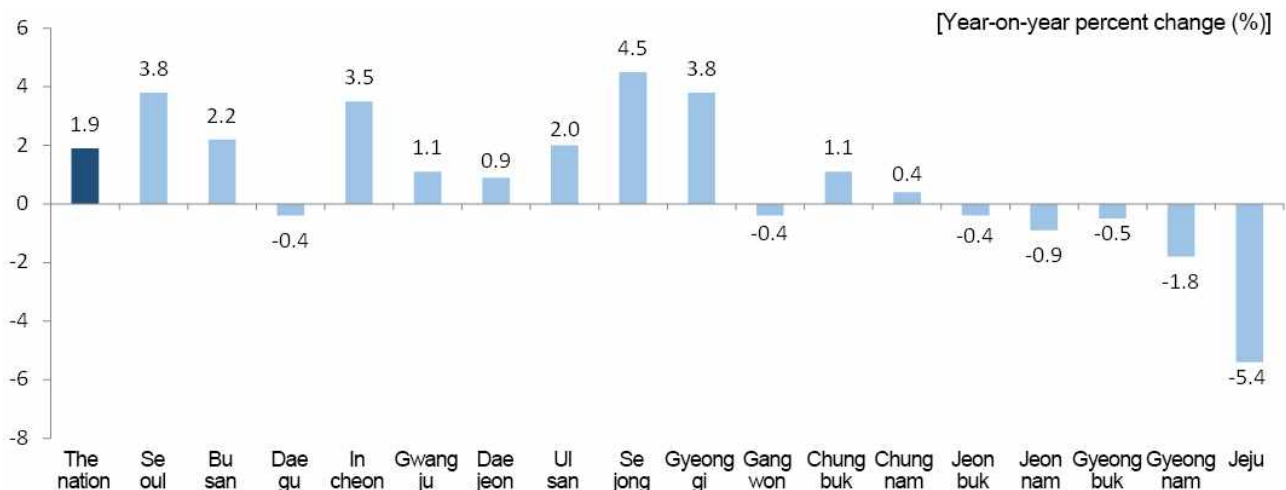


### □ (Index of Services)

In 2025, the Index of Services for the nation went up by 1.9% year-on-year due to the increase in 'Human Health and Social Work Activities' and 'Financial and Insurance Activities'.

- Jeju (-5.4%), Gyeongnam (-1.8%) and Jeonnam (-0.9%) recorded a year-on-year decrease in the Index of Services owing to the drop in 'Information and Communication', 'Real Estate Activities' and 'Accommodation and Food Service Activities'. Whereas, Sejong (4.5%), Seoul (3.8%) and Gyeonggi (3.8%) recorded a year-on-year increase owing to the rise in 'Arts, Sports and Recreation-related Services', 'Financial and Insurance Activities' and 'Wholesale and Retail Trade'.

< Index of Services in 2025 >



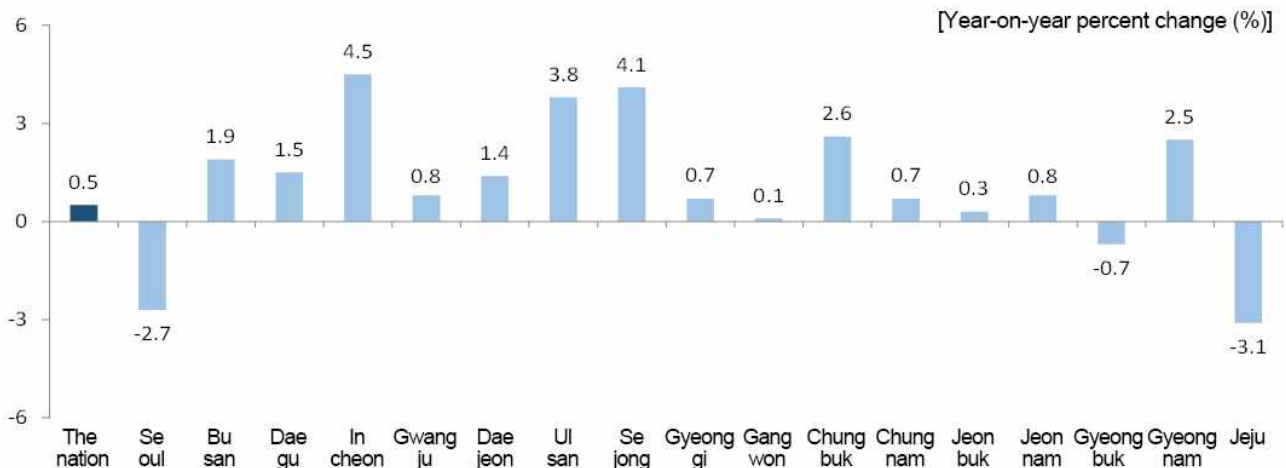
## Consumption and Construction

### (Retail Sales Index)

In 2025, the Retail Sales Index of the nation went up by 0.5% year-on-year due to the increase in 'Passenger cars and fuel stores' and 'Retail sales not in stores'.

- Jeju (-3.1%), Seoul (-2.7%) and Gyeongbuk (-0.7%) recorded a year-on-year decrease in the Retail Sales Index owing to the drop in 'Duty-free shops', 'Supermarkets, convenient stores and other retail sale in non-specialized stores' and 'Specialized stores'. Whereas, Incheon (4.5%), Sejong (4.1%) and Ulsan (3.8%) recorded a year-on-year increase owing to the rise in 'Passenger cars and fuel stores', 'Large discount stores' and 'Supermarkets, convenient stores and other retail sale in non-specialized stores'.

< Retail Sales Index in 2025 >



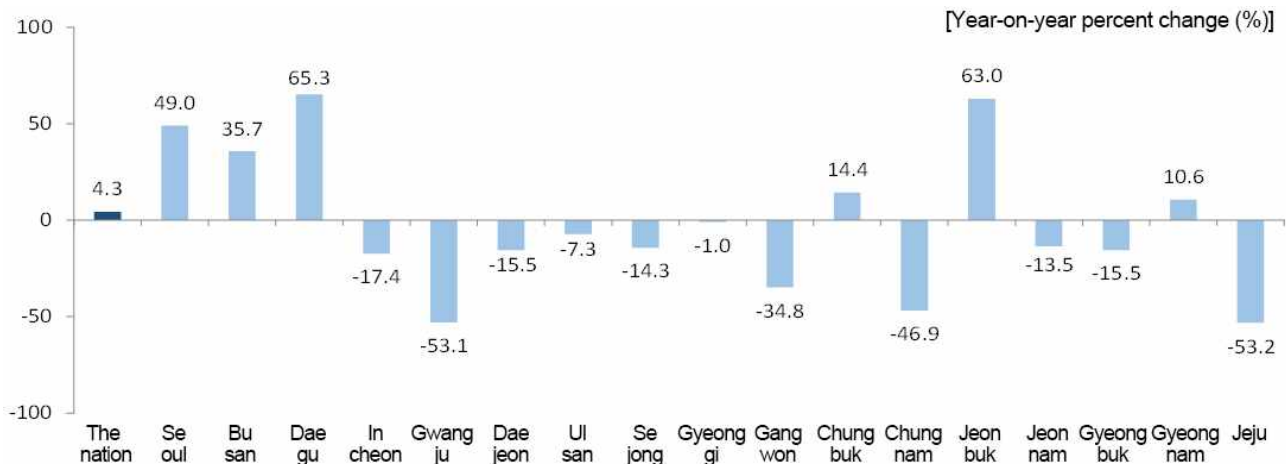
\* The Retail Sales Index of the nation includes 'Retail Sales not in Stores'. Whereas, the Retail Sales Index of 16 metropolitan cities and provinces excludes 'Retail Sales not in Stores'.

### (Construction orders received)

In 2025, the construction orders received of the nation grew by 4.3% year-on-year due to the increase in 'Dwellings' and 'Offices and stores'.

- Jeju (-53.2%), Gwangju (-53.1%) and Chungnam (-46.9%) recorded a year-on-year drop in construction orders received owing to the decrease in 'Dwellings', 'Power generation and transmission' and 'Factories and warehouses'. Whereas, Daegu (65.3%), Jeonbuk (63.0%) and Seoul (49.0%) recorded a year-on-year rise in construction orders received owing to an increase in 'Dwellings', 'Roads and bridges' and 'Offices and stores'.

< Construction orders received in 2025 >



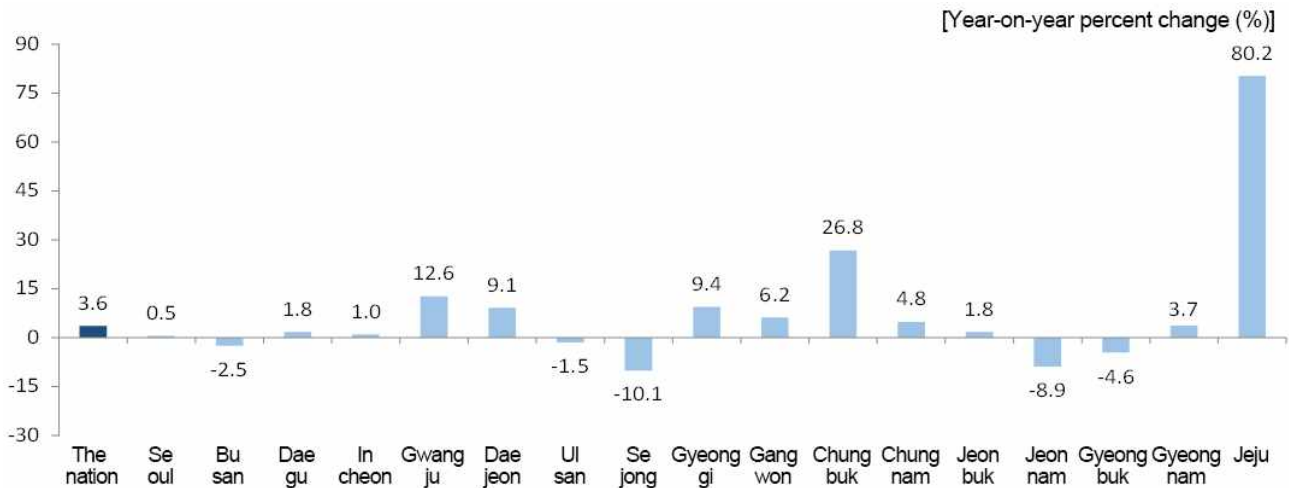
## Exports

### □ (Exports)

In 2025, the exports of the nation grew by 3.6% year-on-year due to a rise in 'Memory semiconductor', 'Vessels' and 'Other heavy and chemical industrial products'.

- Sejong (-10.1%), Jeonnam (-8.9%) and Gyeongbuk (-4.6%) recorded a year-on-year decrease in exports owing to a drop in 'Other synthetic plastic and copper products', 'Diesel' and 'Other organic and inorganic compounds'. In the meantime, Jeju (80.2%), Chungbuk (26.8%) and Gwangju (12.6%) recorded a year-on-year increase in exports due to a rise in 'Other integrated circuit semiconductors and components', 'Memory semiconductor' and 'Processor and controller'.

< Exports in 2025 >



## Employment

### □ (Employment-population ratio)

In 2025, the employment-population ratio of the nation stood at 62.9%, up 0.2%p year-on-year due to the rise in the employment-population ratio of the groups aged '40 ~ 49' and '60 or more'.

- The employment-population ratio showed a year-on-year drop in Sejong (-0.6%p), Jeonbuk (-0.5%p) and Jeonnam (-0.5%p). In the meantime, the employment-population ratio showed a year-on-year rise in Daejeon (1.4%p), Chungbuk (1.3%p) and Gyeongnam (1.2%p).

< Employment-population ratio in 2025 >



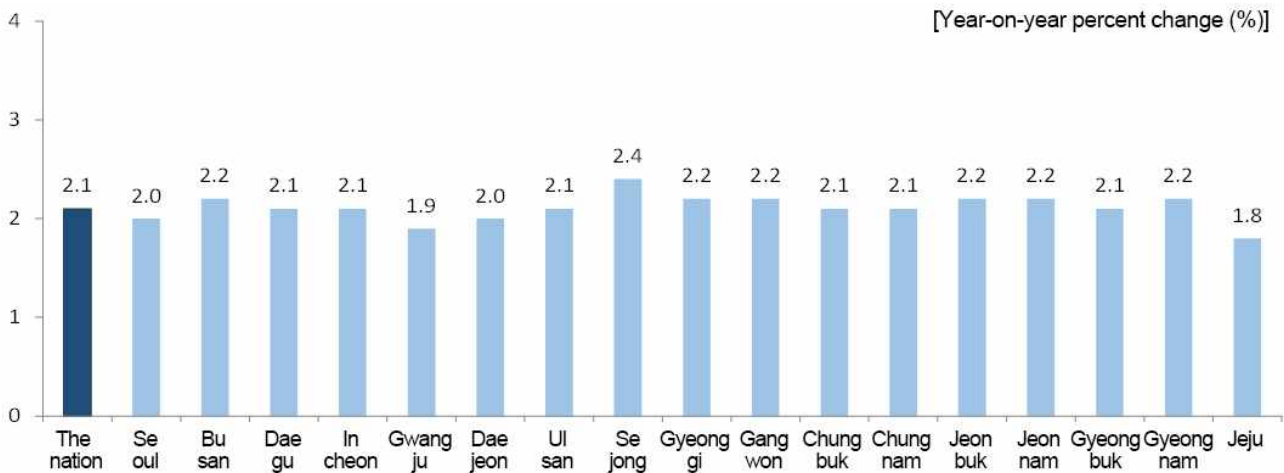
## Consumer Price Index

### (Consumer Price Index)

In 2025, the Consumer Price Index of the nation went up by 2.1% from 2024 owing to a rise in 'Personal services excluding eating out' and 'Eating out'.

- Jeju (1.8%), Gwangju (1.9%) and Daejeon (2.0%) recorded a lower increase rate compared to the nation. Whereas, compared to the nation, Sejong (2.4%), Jeonbuk (2.2%) and Gyeongnam (2.2%) recorded a higher increase rate owing to the rise in 'Personal services excluding eating out', 'Eating out' and 'Processed food products'.

< Consumer Price Index in 2025 >



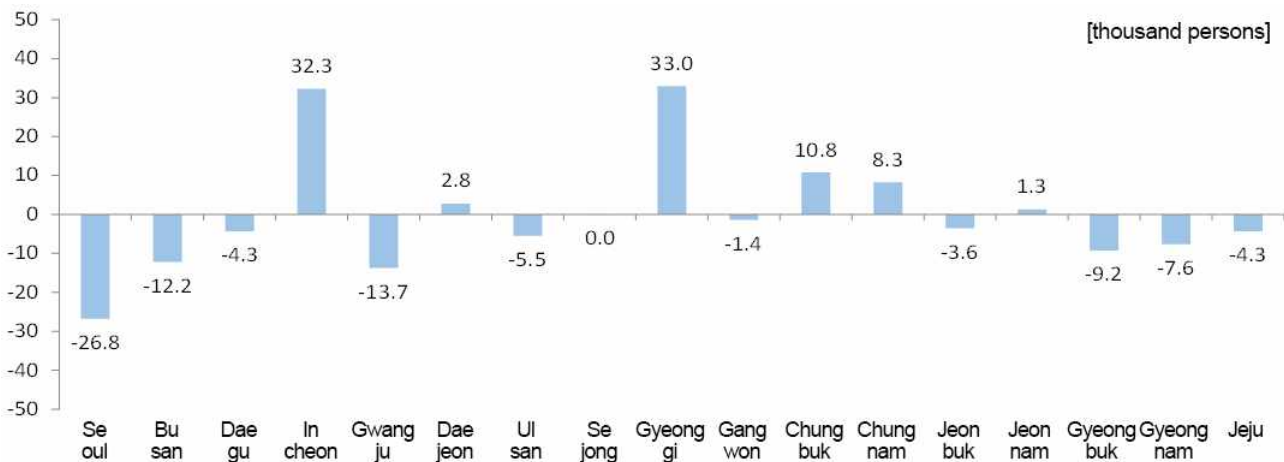
## Population

### (Internal net migration)

In 2025, 6 regions including Gyeonggi (32,970 persons), Incheon (32,264 persons) and Chungbuk (10,789 persons) recorded a plus net migration.

- 11 regions including Seoul (-26,769 persons), Gwangju (-13,678 persons) and Busan (-12,181 persons) recorded a minus net migration.

< Internal net migration by province in 2025 >



< Major Regional Economic Indicators ① >

[Year-on-year, %]

Metropolitan cities and provinces	Production								Consumption <Retail Sales Index3>				Construction <Construction orders received>			
	<Mining and Manufacturing Production Index1>				<Index of Services2>				2022	2023	2024	2025 <sup>P</sup>	2022	2023	2024	2025 <sup>P</sup>
	2022	2023	2024	2025 <sup>P</sup>	2022	2023	2024	2025 <sup>P</sup>								
The nation	1.0	-2.6	4.1	1.6	7.0	3.4	1.1	1.9	-0.3	-1.3	-2.1	0.5	10.0	-18.3	10.9	4.3
Seoul	-2.8	-4.8	-3.2	-7.7	8.9	6.3	1.5	3.8	-1.0	-3.5	-4.9	-2.7	25.1	-21.0	56.7	49.0
Busan	10.0	-7.6	2.8	-4.1	6.5	1.2	0.7	2.2	-0.2	3.0	-1.5	1.9	68.2	-18.6	12.2	35.7
Daegu	5.8	-2.1	0.6	-0.5	4.7	1.7	0.1	-0.4	-0.6	-4.0	-2.3	1.5	-46.2	-45.8	-4.5	65.3
Incheon	1.1	0.7	20.8	-1.0	10.3	7.5	4.0	3.5	2.2	0.2	-4.0	4.5	-27.8	-20.4	47.6	-17.4
Gwangju	6.1	-1.0	4.2	9.4	5.8	3.7	1.1	1.1	-2.1	-1.8	-0.9	0.8	-21.5	133.3	-64.4	-53.1
Daejeon	0.0	-4.8	7.4	-1.7	7.0	4.4	1.4	0.9	0.5	5.7	-3.6	1.4	27.7	-26.7	13.9	-15.5
Ulsan	-0.9	-1.5	1.3	2.8	6.8	2.6	1.5	2.0	-1.5	2.7	-5.1	3.8	20.0	114.6	-54.1	-7.3
Sejong	2.4	-4.8	1.4	-5.5	5.5	1.2	-1.7	4.5	-0.7	-1.2	0.4	4.1	-34.8	-29.6	26.0	-14.3
Gyeonggi	2.5	-2.6	17.5	7.9	7.9	1.9	1.1	3.8	-0.1	-3.3	-3.8	0.7	9.7	-21.5	19.2	-1.0
Gangwon	7.1	2.7	-9.2	-0.9	6.8	1.1	-0.6	-0.4	-0.7	4.4	-3.5	0.1	18.0	-28.1	41.5	-34.8
Chungbuk	1.4	-4.0	-6.1	12.6	6.4	1.3	-0.7	1.1	-1.9	3.1	-0.1	2.6	19.5	-39.2	24.5	14.4
Chungnam	0.2	-3.7	0.0	-0.7	6.5	1.8	-1.1	0.4	-0.8	0.2	0.8	0.7	15.8	-31.0	43.8	-46.9
Jeonbuk	3.2	-5.9	-1.3	-1.6	6.5	3.4	-0.7	-0.4	-0.9	1.2	-2.2	0.3	-8.2	2.9	-33.8	63.0
Jeonnam	-2.8	-1.4	3.1	-3.1	6.2	1.1	-0.8	-0.9	-1.5	-5.2	-1.6	0.8	-6.8	-27.0	-17.1	-13.5
Gyeongbuk	-1.7	-3.8	1.1	1.8	6.0	3.0	-1.0	-0.5	-0.2	3.6	-1.8	-0.7	17.9	-19.6	-32.9	-15.5
Gyeongnam	5.4	2.4	5.3	-1.2	8.4	1.1	-2.4	-1.8	2.5	-2.0	-1.6	2.5	42.6	-36.3	-6.6	10.6
Jeju	5.9	-1.8	-0.5	-1.6	10.9	0.4	4.2	-5.4	0.6	-3.2	-2.5	-3.1	74.1	-28.4	-21.1	-53.2

1) Including Mining, Manufacturing, Electricity and Gas

2) Including Wholesale and retail trade, Transportation, Accommodation and food service activities, Information and communications, Financial and insurance activities, Real estate activities and renting and leasing, Professional, scientific and technical activities, Business facilities management and business support services, Education, Human health and social work activities, Arts, sports and recreation related services, Membership organizations, repair and other personal services and Sewerage, waste management, materials recovery and remediation activities (volume index)

3) Including 'Department stores', 'Large discount stores', 'Supermarkets and convenience stores', 'Passenger cars and fuel stores' and 'Specialized stores' (volume index)

< Major Regional Economic Indicators ② >

[Year-on-year, %]

Metropolitan cities and provinces	Exports				Employment-population ratio <sup>4)</sup> (%)				Consumer Price Index				Net migration <sup>5)</sup> (thousand persons)			
	2022	2023	2024	2025 <sup>P</sup>	2022	2023	2024	2025	2022	2023	2024	2025	2022	2023	2024	2025
The nation	6.1	-7.5	8.1	3.6	62.1	62.6	62.7	62.9	5.1	3.6	2.3	2.1	-	-	-	-
Seoul	-2.4	-0.8	3.1	0.5	60.4	61.1	61.7	61.5	4.5	3.9	2.4	2.0	-35.3	-31.3	-44.7	-26.8
Busan	9.3	-6.7	-3.4	-2.5	57.1	57.7	57.8	58.4	4.8	3.7	2.5	2.2	-13.6	-11.4	-13.7	-12.2
Daegu	34.1	3.5	-19.4	1.8	59.1	59.8	58.0	58.0	5.2	3.5	2.2	2.1	-11.5	-5.3	-4.7	-4.3
Incheon	18.1	-0.9	10.6	1.0	62.7	63.1	63.5	63.3	5.2	3.7	2.6	2.1	28.1	33.5	25.6	32.3
Gwangju	8.1	-1.3	-12.2	12.6	58.6	60.1	60.6	60.8	5.1	3.7	2.5	1.9	-7.6	-9.0	-8.0	-13.7
Daejeon	-5.4	-8.7	7.3	9.1	61.6	61.6	60.6	62.0	4.9	3.5	2.4	2.0	-3.0	-2.5	-1.7	2.8
Ulsan	21.3	-3.0	0.9	-1.5	59.2	59.7	59.8	59.9	5.0	3.6	2.3	2.1	-9.5	-6.2	-4.9	-5.5
Sejong	5.7	-23.0	24.3	-10.1	63.7	64.6	65.2	64.6	5.4	3.0	2.4	2.4	10.1	1.7	2.8	0.0
Gyeonggi	-0.3	-5.6	24.4	9.4	63.9	64.0	64.1	63.8	5.0	3.6	2.3	2.2	43.9	44.6	64.2	33.0
Gangwon	0.7	-1.5	6.5	6.2	61.8	63.3	63.5	64.4	6.0	3.7	2.3	2.2	7.5	-1.4	-2.5	-1.4
Chungbuk	12.7	-14.1	-4.2	26.8	64.9	65.4	65.9	67.2	5.7	3.6	2.2	2.1	5.2	3.9	3.2	10.8
Chungnam	3.2	-26.1	16.6	4.8	64.3	64.8	64.8	65.5	5.8	3.3	2.0	2.1	14.3	15.8	14.7	8.3
Jeonbuk	5.1	-14.2	-9.8	1.8	62.2	63.3	63.8	63.3	5.3	3.3	2.3	2.2	-5.1	-4.5	-6.1	-3.6
Jeonnam	15.5	-8.1	0.3	-8.9	66.3	66.9	66.1	65.6	5.7	3.5	2.5	2.2	-0.3	-1.8	-4.0	1.3
Gyeongbuk	5.9	-12.4	-1.8	-4.6	62.9	63.5	64.0	64.8	5.8	3.4	2.2	2.1	-7.7	-8.2	-8.0	-9.2
Gyeongnam	-11.7	15.1	10.6	3.7	61.1	62.0	62.1	63.3	5.3	3.5	2.2	2.2	-18.5	-16.3	-9.1	-7.6
Jeju	-13.9	-0.1	-2.8	80.2	69.9	69.2	69.3	69.8	5.9	3.0	1.8	1.8	3.1	-1.7	-3.4	-4.3

4) Employment-population ratio (%) = (Employed persons ÷ Population aged 15 or more) × 100

5) Net migration (thousand persons) = In-migration - Out-migration (Net migration of the nation = 0)

6) 'p' indicates preliminary data.