



Statistics Korea

Press Release

다시, 대한민국!
새로운 국민의 나라

Embargo 12:00P.M., April 11, 2024 Release Date 8:30A.M., April 11, 2024

Population Prospects of Koreans and Foreigners based on the 2022 Population Projections: 2022~2042

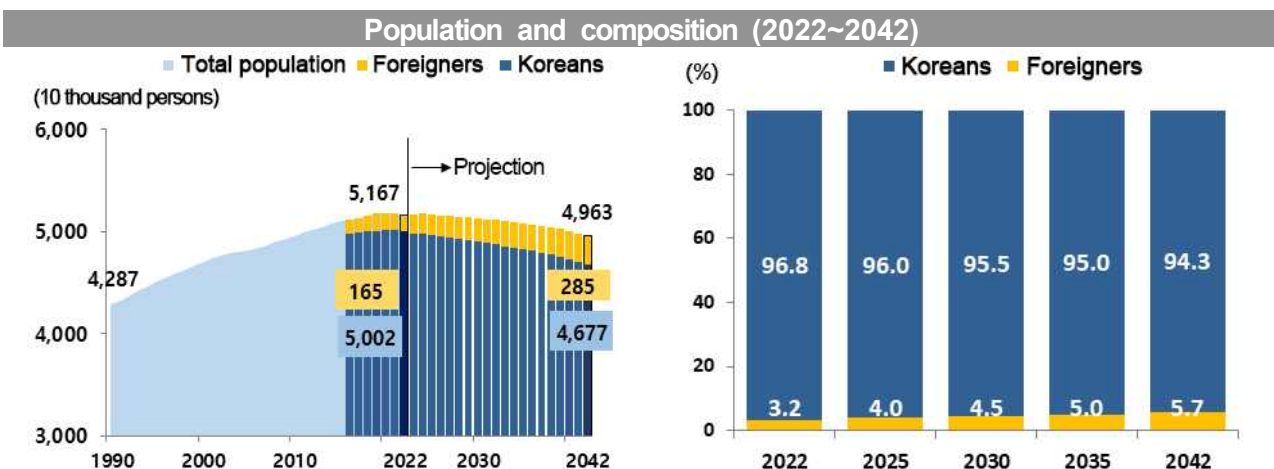
Contact Division	Population Projection Team, Social Statistics Bureau	Contact Person	Ohn, Nu-ri	(042-481-1256)
------------------	---	----------------	------------	----------------

Population Prospects of Koreans and Foreigners based on the 2022 Population Projections: 2022~2042

The population* of South Korea is projected to drop from 51.67 million persons in 2022 to 49.63 million persons in 2042. Among the total population, the share of Koreans is projected to decrease from 96.8% in 2022 to 94.3% in 2042. Whereas, the share of foreigners is projected to increase from 3.2% in 2022 to 5.7% in 2042.

* A sum of Koreans and foreigners who have resided in South Korea for 3 months or more

- The total population of South Korea is projected to decrease to 49.63 million persons in 2042. The share of Koreans is projected to drop to 94.3% (46.77 million persons) of the total population in 2042. The share of foreigners is projected to rise by 1.8 times to stand at 5.7% (2.85 million persons) of the total population in 2042.



The working age population of Koreans is projected to drop from 35.27 million persons in 2022 to 25.73 million persons in 2042. The working age population of foreigners is projected to rise from 1.47 million persons in 2022 to 2.36 million persons in 2042.

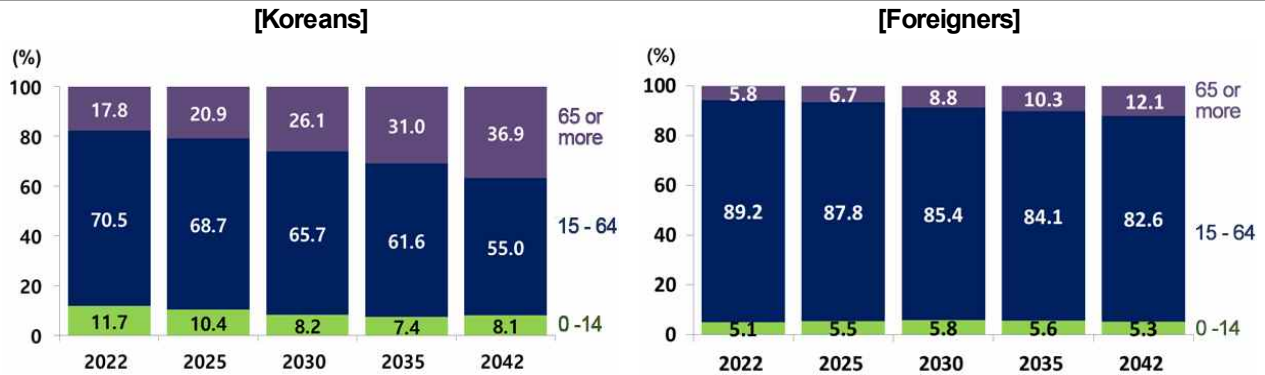
○ (Age structure of Koreans)

As for Koreans, the share of working age population aged 15~64 is projected to decrease from 70.5% in 2022 to 55.0% in 2042. The elderly population aged 65 or more is projected to increase from 17.8% in 2022 to 36.9% in 2042. The child population aged 0~14 is projected to decrease from 11.7% in 2022 to 8.1% in 2042.

○ (Age structure of foreigners)

As for foreigners, the share of working age population is projected to decrease from 89.2% in 2022 to 82.6% in 2042. The elderly population is projected to increase from 5.8% in 2022 to 12.1% in 2042. The child population aged 0~14 is projected to increase from 5.1% in 2022 to 5.3% in 2042.

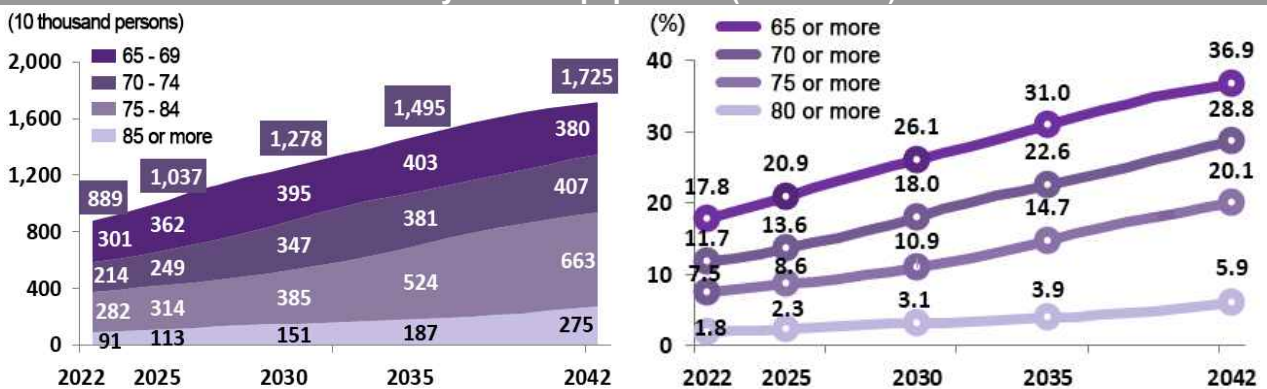
Age structure of the population (2022~2042)



The elderly Korean population aged 65 or more is projected to increase by 1.9 times for the next two decades from 8.89 million persons in 2022 to 17.25 million persons in 2042.

- The elderly Korean population aged 65 or more is projected to exceed 10 million persons in 2025 and 15 million persons in 2036.
- The share of the elderly Korean population is projected to record 17.8% in 2022, exceeding 20% in 2025 and 30% in 2035.

Elderly Korean population (2022~2042)

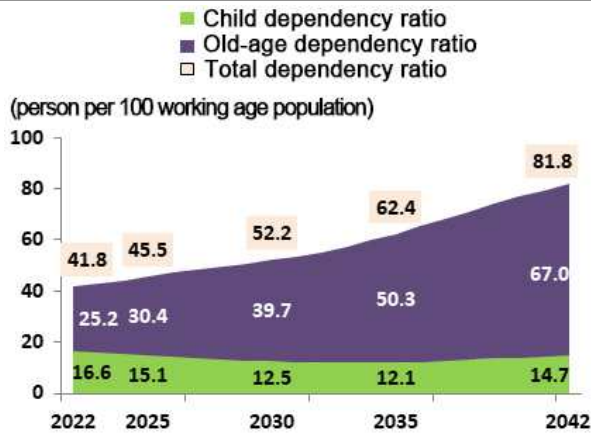


The total dependency ratio* is projected to increase from 41.8 persons in 2022 to 81.8 persons per 100 people of working age in 2042.

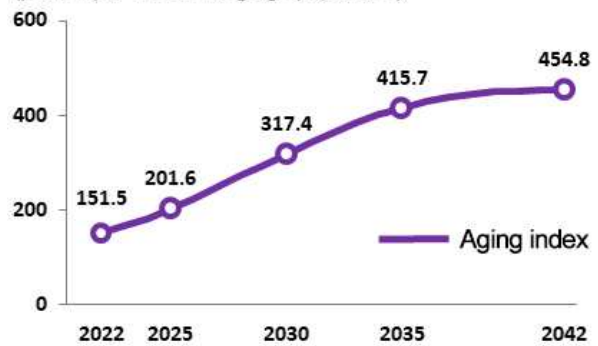
* Total dependency ratio = Child dependency ratio + Old-age dependency ratio

- For the 2022~2042 period, the child dependency ratio is projected to record 12~17 persons per 100 people of working age. In the meantime, owing to a rise in the elderly population, the old-age dependency ratio is projected to increase from 25.2 persons in 2022 to 67.0 persons per 100 people of working age in 2042.

Dependency ratio and aging index of Koreans (2022~2042)



(person per 100 working age population)



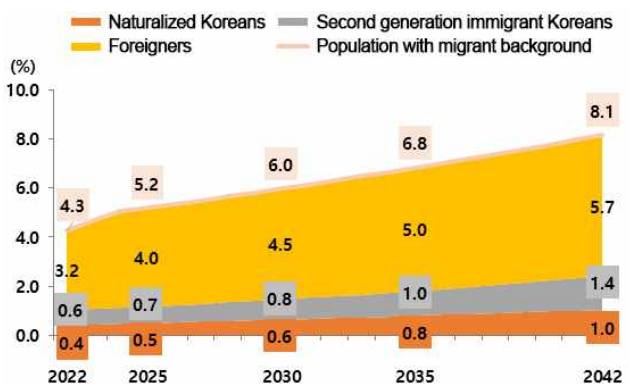
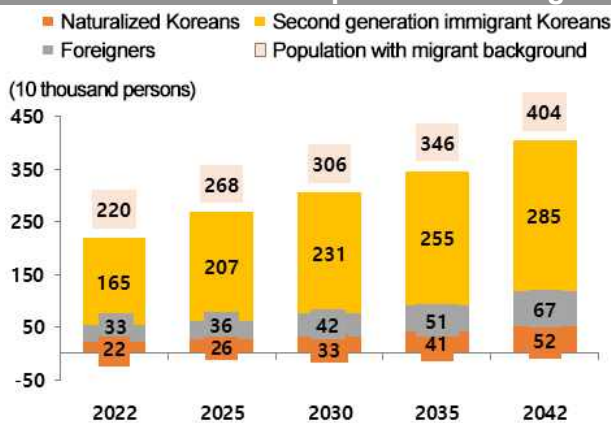
* Aging index: Elderly population per 100 child population

The population with migrant background* is projected to rise from 2.20 million persons in 2022 to 4.04 million persons in 2042. Among the total population, the share of the population with migrant background is projected to rise from 4.3% in 2022 to 8.1% in 2042.

* The population with migrant background refers to people who were born as foreign nationals or are currently foreign nationals, and people whose parents (or parent) were born as foreign nationals or are currently foreign nationals. It is calculated as the sum of naturalized Koreans, second generation immigrant Koreans and foreigners.

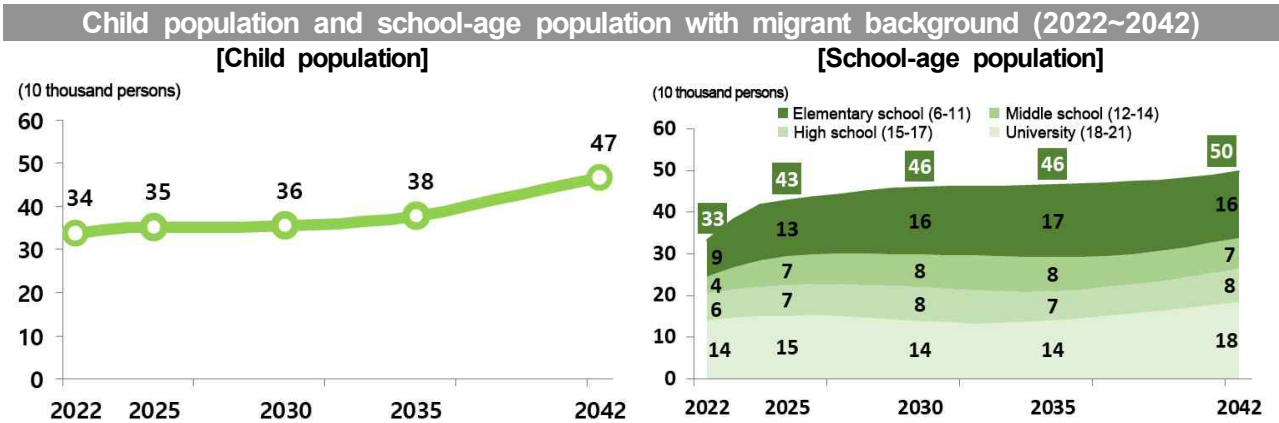
- Among the population with migrant background, naturalized Koreans are projected to rise by more than 2 times from 220 thousand persons in 2022 to 520 thousand persons in 2042. Second generation immigrant Koreans are projected to rise by more than 2 times from 330 thousand persons in 2022 to 670 thousand persons in 2042.
- Among the total population, the share of naturalized Koreans is projected to rise from 0.4% in 2022 to 1.0% in 2042. The share of second generation immigrant Koreans is projected to rise from 0.6% in 2022 to 1.4% in 2042.

Population with migrant background (2022~2042)



Among the population with migrant background, the school-age population aged 6-21 is projected to increase by more than 1.5 times for the next two decades from 330 thousand persons in 2022 to 500 thousand persons in 2042.

- Among the population with migrant background, the child population aged 0~14 is projected to increase by more than 1.4 times from 340 thousand persons in 2022 to 470 thousand persons in 2042.



<Major statistical terms>

- 'Koreans' refer to Korean nationals by birth or naturalization.
 - 'Koreans by birth' refer to Koreans who were born as a Korean national and whose parents are Korean nationals by birth.
 - 'Naturalized Koreans' refer to Koreans acquiring Korean nationality by naturalization according to the nationality act. Koreans restoring their Korean nationality are excluded.
 - 'Second generation Koreans' refer to Koreans by birth whose father or mother is a foreign national or a naturalized Korean.
- 'Foreigners' refer to aliens who don't have Korean nationality according to Article 2-2 of the Immigration Act.
- The population with migrant background refers to people who were born as foreign nationals or are currently foreign nationals, and people whose parents (or parent) were born as foreign nationals or are currently foreign nationals.
 - The population with migrant background is calculated as the sum of naturalized Koreans, second generation immigrant Koreans and foreigners.